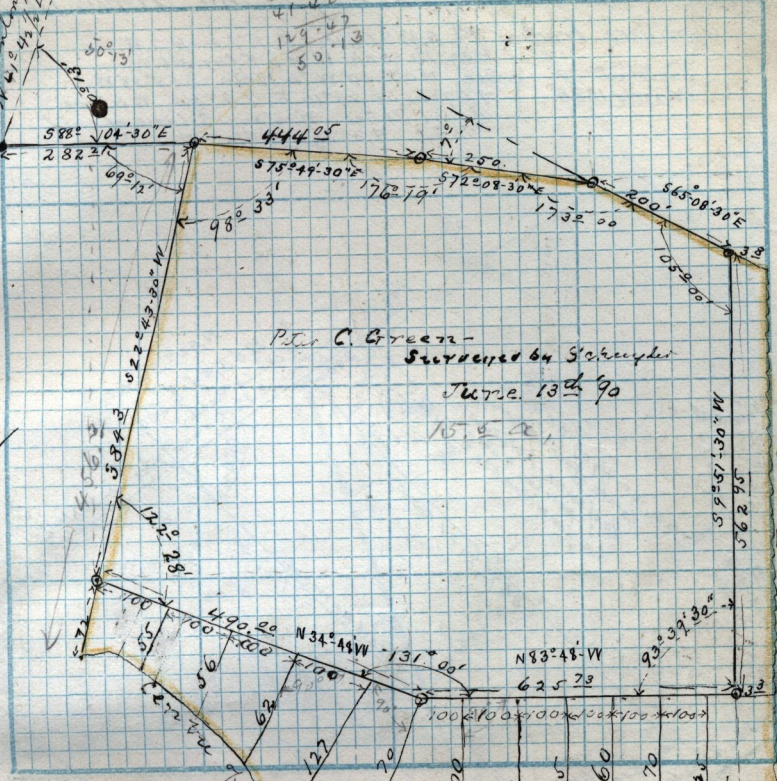


$$\begin{array}{r} 85-04-30 \\ 41-47-30 \\ \hline 129-47-30 \\ 50-13 \end{array}$$

N.W. Cor.  
 S.E. 1/4 Sec 3  
 T-6-N-R-2-W.



P.L. C. Green -  
 Surveyed by S. C. Sawyer  
 June 13th '90

Scale: ..... 100 feet = 1 inch  
 Chains per inch

- to here -

fence is East Boundary  
 1477.90